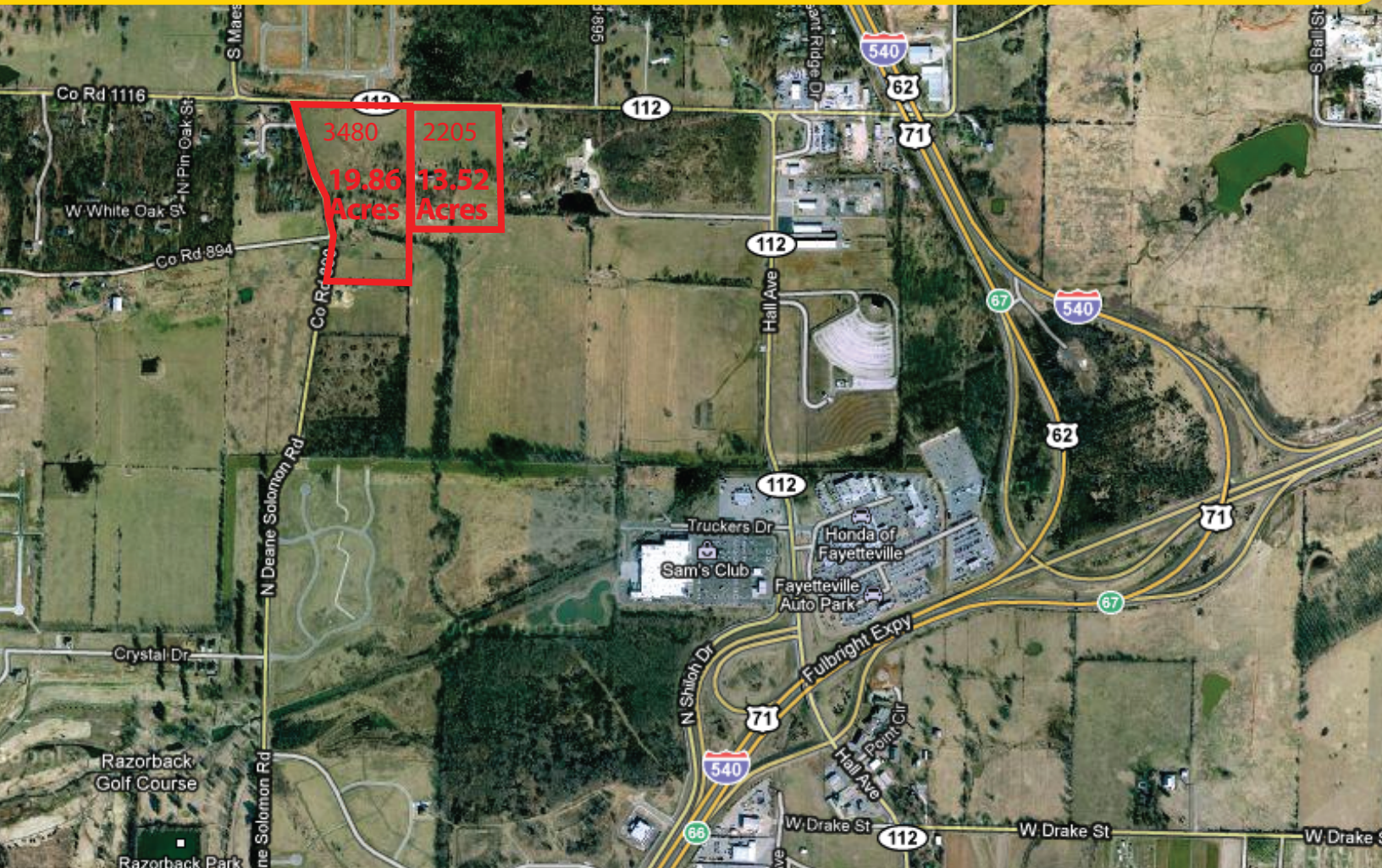


2205 W Hwy 112 and 3480 Deane Solomon Rd.

Fayetteville AR



GRUBB & ELLIS
Solomon Partners



3480 Deane Solomon Rd - \$1,185,000

19.86 acres available. Property can accommodate mixed-use or clustered residential developments and single-use residential developments, multi-family and light commercial on small lots.

2205 W Hwy 112 - \$1,150,000

13.52 acres available with a 3105 SF SFR. Majority of the value is provided by the vacant land which could accommodate mixed-use or clustered residential developments, multi-family and/or SFR on small lots.

To learn more, please contact:

Clinton Bennett, CCIM, CLS

479.200.3457 cell

cbennett@grubbellisar.com

Grubb & Ellis|Solomon Partners | 609 SW 8th St., Ste. 220 | Bentonville, AR 72712 | 479.271.6118 main | www.grubbellisar.com

The information contained herein was obtained from sources believed reliable; however, Grubb & Ellis Company makes no guarantees, warranties, or representations as to the completeness or accuracy thereof. The presentation of this property is submitted subject to errors, omissions, change of price or conditions prior to sale or lease, or withdrawal without notice.